

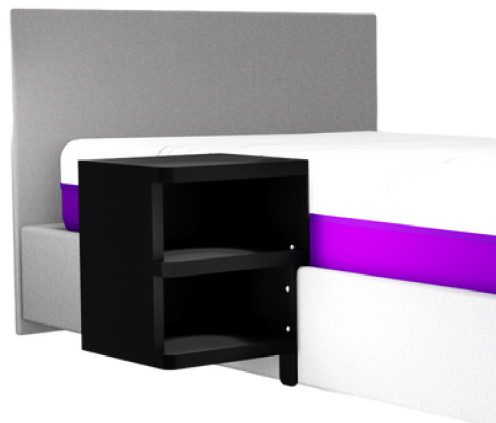
## BED MOUNTED SIDE TABLE

The Icare side table is the only unique bedside system that allows the unit to be positioned anywhere along the side of the bed for easy access to items for clients with reduced mobility.

The dark semi gloss look compliments the Icare homecare range and features two shelves and a handpiece holder. Available in left and right hand sides.

Height above mattress platform 155mm  
 Unit width from side of bed 275mm  
 Unit depth 300mm

Script table from clients perspective:  
 Table to be on clients left = left table.  
 Table to be on clients right = right table.



Compatible with:

- IC100
- IC111
- IC280
- IC333
- IC555
- IC777

PRODUCT CODES	
Description Code	Icare Bedside Attachment - Left ACBAT-L
Description Code	Icare Bedside Attachment - Right ACBAT-R

## FOLD DOWN TRAY TABLE

The Icare fold down tray can be positioned anywhere along the side of the bed. the tray can be folded out of the way leaving a small fixed shelf.

The dark semi gloss look compliments the Icare homecare range and features an easy fold down tray

Height above mattress platform 150mm  
 Unit width from side of bed 260mm  
 Unit depth 300mm



Compatible with:

- IC100
- IC111
- IC280
- IC333
- IC555
- IC777

PRODUCT CODE	
Description Code	Icare Folding Tray Attachment ACFTRY